

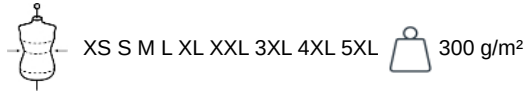


WK4000

Polo neck sweatshirt

- Backing on shoulders and longer yoke finish at the back for greater coverage and optimum protection.
- Perfect for food industry professions.
- Excellent printability and wash resistance.

80% cotton/20% polyester. 3-thread fleece with LSF (Low Shrinkage Fleece) treatment. Washable at 60°C. Ribbed polo neck and cuffs. 3-button placket. Metal plastic-covered buttons ideal for the catering industry. Earphone access in the pocket and neckline loop for headphones. Invisible zipped pocket on right-hand side. Shoulder backing. Pen holder on left sleeve. Half-moon finish on back. Hanging loop at neck. Twin needle finishing at hem. Longer back for added comfort. Average weight size L : 520g.



More information

Logistic



Country of origin



BD - Bangladesh

Customs code



61051000



Black

Dark Grey

Navy

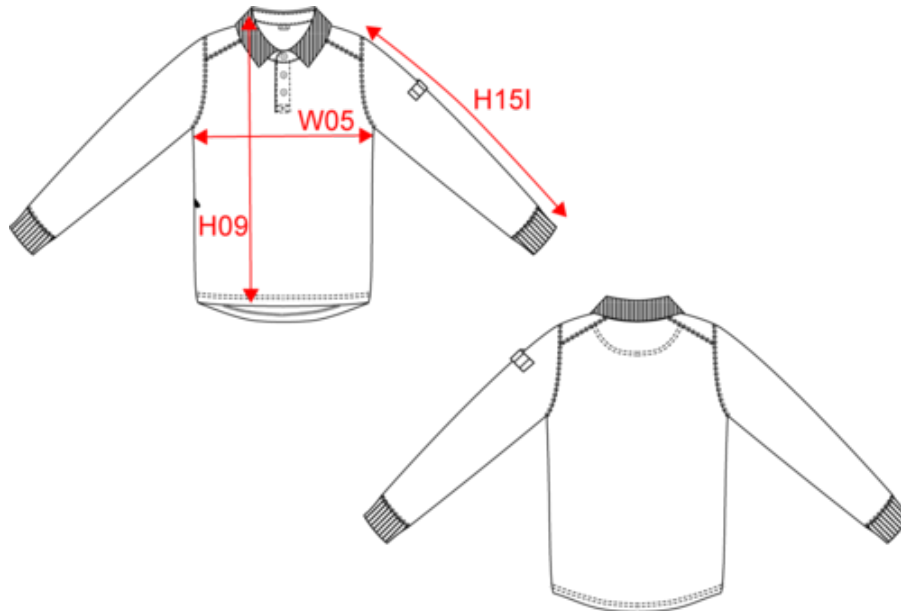




WK4000

Polo neck sweatshirt

Dimensions (cm)



Measurements in cm	XS	S	M	L	XL	XXL	3XL	4XL	5XL
H09 (K)* - Front total height	142.00	144.00	146.00	74.00	76.00	78.00	80.00	82.00	84.00
H15I (M) - Sleeve length with rib	63.00	64.00	65.00	66.00	67.00	68.00	69.00	70.00	71.00
W05 (M) - 1/2 chest width at 1.5cm below armhole	50.00	53.00	56.00	59.00	62.00	65.00	68.00	71.00	74.00



WK4000

Polo neck sweatshirt

Colours information



Black

RVB : 35,35,37
Pantone C : Black
Pantone TCX : 19-4004TCX



Dark Grey

RVB : 63,60,60
Pantone C : 447C
Pantone TCX : 19-0000TCX



Navy

RVB : 41,46,56
Pantone C : 433C
Pantone TCX : 19-4012TCX

Logistic



5



15

Sizes	Width (cm)	Height (cm)	Length (cm)	Net weight (kg)	Gross weight (kg)	Pieces/Box	Pieces/Bundle
XS	40	26	60	6.7	8.2	15	5
S	40	26	60	7	8.5	15	5
M	40	26	60	7.3	8.8	15	5
L	40	28	60	8	9.5	15	5
XL	40	28	60	8.3	9.8	15	5
XXL	40	28	60	8.9	10.4	15	5
3XL	40	30	60	9.3	10.8	15	5
4XL	40	30	60	9.8	11.3	15	5
5XL	40	30	60	10.6	12.1	15	5